



March Report



(above) Railroad Exhibit in New Bern. From left to Right: Brode, Gower, Mahoney, Roger and Cheryl. (Bishop and Debra Mahoney missing from Pic).

Presidents Message:

Meeting was called to order by the President with the following members present:

Jim Gower, President
Debra Mahoney, Secretary
Dave Mahoney
Hank Bishop
Andy Fulcher
Adam Campbell
Roger Noyes
Roger Brown
Jude Brown * new member
Alan Norris * new member

Our March meeting was one of the best meetings yet. Our membership has increased and we gained two new members at our March meeting with great models they are currently building. It seems that our location at the Shop Class Building is the best and most comfortable location for a good many of our members as it offers our members a chance to utilize the woodworking shop area before or after our meeting.

I had the opportunity to attend the IPMS Model Expo held in Atlanta this past weekend. There were 60 plus Vendors with everything

available from planes, boats, trains, cars, books, tools and other items too numerous to mention. I observed the majority of the kits were plastic planes dating as far back to the 1980's and a lot of collectable kits still in the original shrink wrap.

The model exhibits numbered about 500 and judging went on all afternoon. Dave Lockhart who is the National IPMS President was there. I knew Dave from the Atlanta Boat Club before I relocated back to the good old Tarheel State. It was good to see fellow members of the club and catch up on old times.

Jude Brown* lives in Oriental, and came to the Beaufort Meeting last month. I told him about our meeting and location and he has since joined our merry band.

Alan Norris* cam by way of our exhibit at the Railroad Show held in New Bern several weeks ago, and like many of us has only gotten to the point that he has time and interest to restart his interest in model building.

Other business was an update on the upcoming Model Expo to be held on July 9th at the Havelock Convention Center, which according



New Bern Maritime Modelers Guild.

March, 2022

to the IPMS East Coast Group is still on and Vendor registration and model entries are beginning to register for the exhibit. It should be a great show with raffle prizes and some great models of planes, boat, trains, tanks, Star War themes and many other categories too numerous to mention.

NBMMG had a table at the Railroad Exhibit in the convention Center in New Bern several weekends ago and got 20 interested contacts who are interested in modeling. The show was a two-day event, and we got a lot of compliments on our display.

Thanks to Dave and Debra Mahoney, Hank Bishop, Jim Brode, Cheryl and Roger Noyes for manning the table. It was a great success and thank you all for helping out.

A reminder that the Beaufort Wooden Boat Show will be held on May 7th in Beaufort. Models for display will be set up inside the museum in the meeting room as in the past. There will be full size boats outside in the street and in the Boatbuilding Shed across the street from the museum.

For our show and tell we had more models to display than ever before.



(above) Adam Campbell's model of the whaling Ship Essex. Nice planking. Pictured above is Hank Bishop's scratch-built model of an 1880's paddle wheeler. Sorry Hank, don't know why our professional photographer couldn't get a separate shot.

Adam Campbell brought in a work in progress of the whaling vessel Essex. It is a double planked kit from Occre, and his planking was spot on. A brief discussion regarding painting the Mahoney planking ensued, and most agreed that Adam should leave it as is, since the planking was built so good. Of course, it's Adams' model and the final choice is his.

He also presented the hull of the Brig Niagara by Model Shipways he is also working on. The discussion was since it was a single plank on bulkhead, what was the best way to start and ensure his planking was correct. Advice ranged from starting at the keel, to starting at the waterline, adding stealer planks as required, bending and soaking methods of the planks to ensure a true and smooth fit. Another idea that was floated, was to go online to the NGR's Model Ship Building Forum and find a build blog of this historic vessel. After looking at Adams' planking on the Essex, I don't think he will have much difficulty on finding the method that fits his style of building.

Great models Adam, can't wait to see the progress at a later date. Adam is also going over to Italy at the end of the month on business and plans to take a side trip to one of the Italian model building manufacturing plants. Careful Adam, you may buy too many models, and have to leave your clothes behind! On second thought, not a bad swap.

Hank Bishop brought in a 3-foot scale model of an 1880 stern paddle wheel he built back in 2006 from plans. It was all wood construction, and was originally made



New Bern Maritime Modelers Guild.

March, 2022

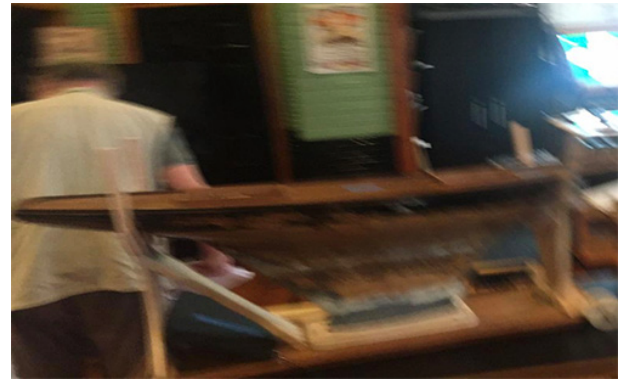
for R/C operation. So far, the gear mechanism to turn the stern paddle wheel is in place, but Hank has not yet committed to completing the equipment for R/C operation.

Another fine scratch-built model from Hank. Roger Noyes presented a sailing pond boat his father had left up his cottage in Maine. This model is between 1903-1920 era when pond sailing was at its best in the area. It is a one mast sloop rigged model between 50 and 60 inches long with a lead keel weighing 30 lbs.!

The solid block carved hull has room for R/C control if desired. I think Roger will complete restoration of his dad's model and display it as a family memento.

There's not a lot of these boats left that represent this type of modeling and operating on ponds in the older days. Kids today are missing a fun adventure on sailing a model on a body of water instead of playing games and using computers.

Dave Mahoney brought in a speed boat his has been working on over the past couple of years. He has started installing the forward deck with Mahoney and plans to fill the void between each plank with dark epoxy to represent the caulk lines. As usual he will incorporate one of his outboard motors, he builds to complete the project, Hey Dave maybe you and Andy will have a race to see which one completes his model first!



(above) Roger Noyes Model of his dad's pond sail boat from the 1930's. Sorry for the fuzzy print, must have been on a donut high when the pic was snapped. Can't wait to see the finished model.



(above) Jude Brown's model of a skiff built by his father. These boats were used to run mail up and down the Carolina coast up to the early 1950's. Good looking sails.



(above) Dave Mahoney's runabout with forward decking being installed.



New Bern Maritime Modelers Guild.

March, 2022

Speaking of Andy Fulcher, that boat building kinda of a guy, he presented a wooden jig board he is incorporating in building a Cris Craft Runabout. Andy explained he uses the jig to make sure the planks are straight and at the correct curvature to fit the hull. In todays modelling I see a lot of jigs being made to facilitate and aid in building models.

Lastly, Jude Brown presented a model of a skiff used on the N. C. coast as a mail boat. His father made many wooden models of this kind

of work boats. There were stories of mail boats used up and down our coast into the 1950's. Jude also showed us a model of an ice boat that was on the Neuse River one year that the weather got so cold the river iced up enough to put her out and go skiing.

Editor's note: The camera did not record the wood jig presented by Andy Fulcher, that kinder boat building guy, and did not record Hank Bishop's model of his Stern Paddle Wheeler. We apologize for these omissions.



(left) Robert Tuttle's model of the Malabar II, a John Alden Design for a Florida Client.

(right) Dale Albrecht's model of the Friendship sloop measuring between 5 and 6 ft. Dale was unable to attend the last meeting, so he submitted a pic of his current project.



(left) Adam Campbell's model of the Brig Niagara from Model Shipways. She's ready for planking.



Member Spotlight: Robert Tuttle



Robert Tuttle of Clemmons, N.C. Robert Tuttle built his own house in 1985 and it included a 24 x 48 building to be used as a wood working shop. His first attempt at boat building was to build a construct a large SANTA MARIA model to be displayed on a mantel in his living room. He built three models before finding the scale and expertise to finish the model of his dreams for the living room. Soon afterwards he decided to build a North Carolina shrimp boat. After he completed a model of a real shrimp boat, the CAPT PHILLIPS from Swansboro, N. C.

This experience led Robert to make two very important decisions with his boat building. First, everything would be scratch built and secondly everything would be built to scale, preferably 1/12 or 1/24 scale.

He specializes in North Carolina boats and has built Coresounders, Shrimp boats, state boat of North Carolina, a Shad boat, Spritsail Skiffs, North Carolina Oyster Sharpie and all of these models were built to scale and with the woods traditionally used on the real boats.

He has also built Maine Lobster boats, Mississippi Lugger Shrimp boats, Noah's Ark, Jesus Boat, and Abaco Dingy Boats from the Bahamas, John Alden's design of a schooner, the MALABAR II, which was in the movie Message in a Bottle and he also builds Pirogue boats.

When asked how many boats he had built, he said, "Well, I don't really know, but probably around 400 or so, I built 200 Noah's Ark boats at one time".

He works regularly in his shop every day and when asked how long he works each day, he said "I only work one half a day, I work from 7 until 7".

Finally, our next meeting is April 9th, at 12 noon at the shop Class Building located at 406 Guion St. New Bern, N.C.

Don't forget to support our local Hobby Shop The Hobby Chest, in Jacksonville, N.C.